



NEWSLETTER

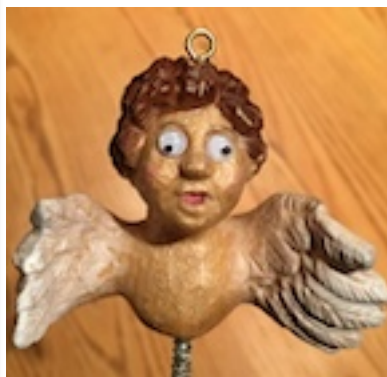
JULY 2025



NEXT MEETING: Wednesday, July 9, 7:00PM.

The program will be presented by Bill Huggins: **"Butterfly Carving"**. Members are encouraged to bring carving tools as this program is a hands-on class.

The meeting will be at St. Stephens Methodist Church in Broken Arrow.



Door Prize ideas for the Summer Show, see next page.



June Show and Tell: This relief carving of a classic Gary Larson cartoon was done by Steve Walter

Note that the past newsletters are archived on our web site and will be available for reference. The web site url is: www.eowa.us
If you are on Facebook you should 'Like' us for any breaking information. The address is: www.facebook.com/groups/EasternOklaWoodcarversAssoc/ or go to your Facebook page, search for 'Eastern Oklahoma Woodcarvers' and click on "Like" icon.



Carving a 15-Minute Santa

MINUTES OF MEETING

JUNE 11, 2025

16 PRESENT

CALL TO ORDER: Paul Barry

FLAG SALUTE: Royall Sams

JACKPOT: Royall Sams

VISITORS: None

NEW MEMBERS: None

TREASURE REPORT: Balance \$2458.80.

Web site will be one payment next year/
Church has been paid. Dues for club
membership are due next month. Beware of
scams.



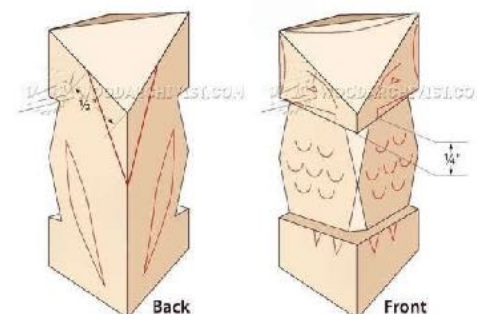
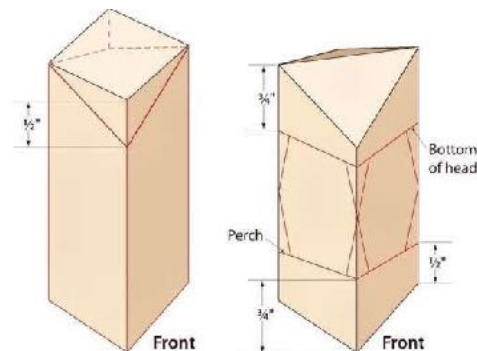
Door Prizes For 2025 Show

The show chair plans to reintroduce the hourly door prizes at the 2025 show. To do this we need for members, carvers and exhibitors to make some small, simple item to give away such as the little birds, Christmas ornaments, boots, butterflies (see page one), 3-minute owls, little mice, small refrigerator magnets, 15-minute Santa, pliers, etc.

The key words here are think small and simple. Bring them to meetings or to the show Start now.

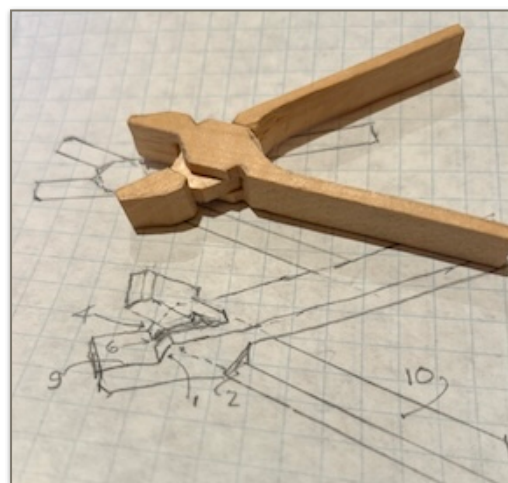
Thanks!

Flo Hancock, Show Chair



3-Minute Owl (above)

3-Minute Pliers (below)



Mary May Woodcarving School to open at Lake of the Ozarks, MO.

For more information contact:

Website:

www.marymaycarving.com

Class schedule:

https://marymaycarving.com/mary_in_person_classes

SHOW REPORT: Next meeting is July 16 at 7:00 p.m. 18th.

NEW BUSINESS: Need some to volunteer to cut out Christmas ornaments for the club.

PROGRAM: All you need to know about the use of glue, how to apply, how long to let it set and what kind to use.

OUR NEXT MEETING IS JULY 9TH AT ST STEPHENS CHURCH. EVERYONE WELCOME. UPCOMING SHOW IS IN OCTOBER. COME JOIN IN ON THE FUN AT THE MEETING. SEE YOU NEXT TIME.

2025 EOWA Folk Art and Woodcarver Show: The dates are October 17-18 with set up on the 16th. We are looking at extending the Friday times to noon to 8:00pm with the woodcarving judging from 10am to noon.

New for the EOWA 2025 Arts and Crafts Festival

The Broken Arrow Rose District is joining with EOWA to sponsor a \$200 Rose Challenge. All festival exhibitors are encouraged to create a rose from the medium of choice, i.e. ceramics, wood, fabric, stained glass, etc. The rose winner will be chosen by the Rose District development coordinator and an EOWA member and retained by the Rose district for future use and display.



After reading Rusty's article in the June Newsletter about the big penguins that were sold to support the building of the Tulsa Zoo's new penguin exhibit I was reminded of the table top sized replica of the six footers that were sold in the Zoo's gift shop. As could be expected the thin wings of the smaller molds got broken during handling. The job fell to me to repair the broken birds. A small hole was drilled into each part of the broken wings and a bamboo pin was inserted and epoxied in place. After drying, the cracked area was sanded smooth, and the birds were returned to the gift shop. I remember repairing two dozen.



Bill Payne

Footnote by Rusty Johnson: I anticipated this problem when I was sawing out the penguin so I cut the wings, feet and beak separately with the wood grain width-ways instead of up and down. I then glued the pieces in place. All was well until the penguin was knocked off my work bench and the right wing popped right off at the glue line. I then cursed, pegged and sanded it like Bill did.



A beautiful chain-saw rose, fortunately it is not a Rose Challenge competitor .

New Membership, Change of Address or Membership Renewal

Dues: \$30 for annual family membership (due each July). Date:

Name _____ Spouse _____

Address _____

City _____ State _____ ZIP _____

Home phone _____ Cell Phone _____

Retired: Yes No email _____

Mail to: EOWA, Roy Heginbotham, 63910 E. 297 Ln. Grove, OK 74344. Phone 405-637-8006



EOWA dues are due July 1 each year. Please send your check to: EOWA, Roy Heginbotham, 63910 E. 297 Ln, Grove, OK 74344

Or bring your check to the meeting and hand it over to Roy personally.